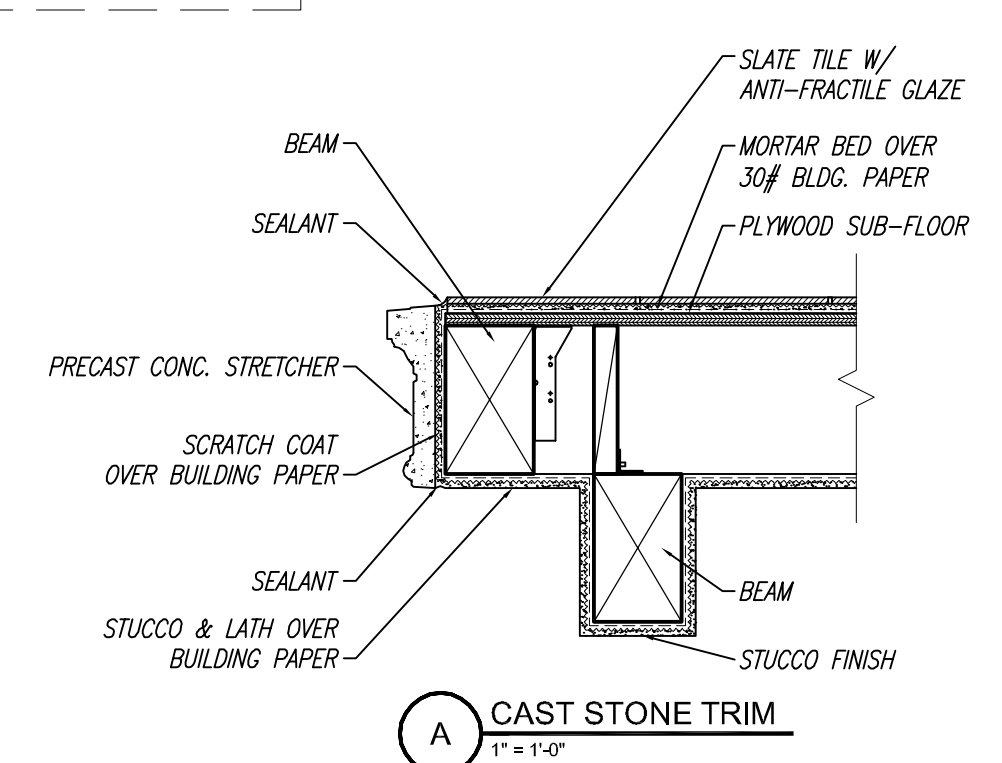


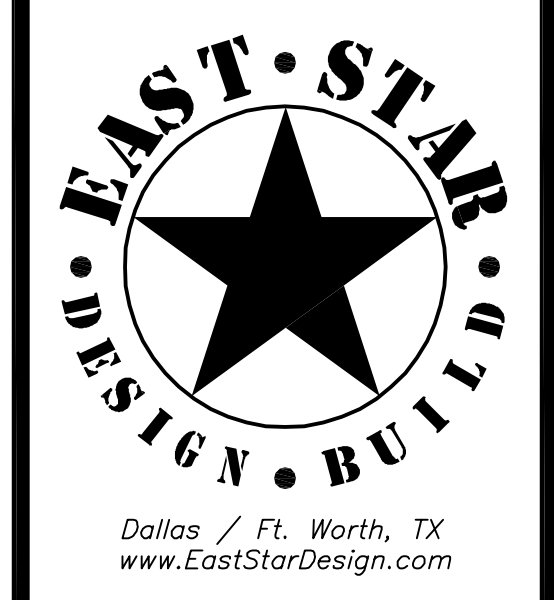
1 LONGITUDINAL BUILDING SECTION
1/2" = 1'-0"



A CAST STONE TRIM
1" = 1'-0"

#	REVISION
1	

PREPARED BY:



DRAWING TITLE: LONGITUDINAL SECTION
 PROJECT: Two Story Addition
 APPLICANT:
 PROJECT:

DRAWN BY: G.G. & ASO
 DATE: 09/12/06
 PROJECT #: 033
 SHEET #: (6 OF 15)

A-3.1